

International EAS Summer Fly-In 2019



16.-18. August
Birrpfeld (LSZF)
Switzerland

Version 1.5

www.experimental.ch

Pilot Briefing Pack

Dear pilots and visitors

This briefing should provide you with some key information for the EAS Fly-In in Birrfeld. Please treat this as additional source of information it does not substitute your flight briefing.

Preflight



Check Birrfeld Webpage www.birrfeld.ch



Please **register** your arrival at EAS office@experimental.ch or via online form on the experimental.ch webpage under **EVENTS**

No PPR required



International Arrivals from Schengen countries:

No goods >= 300 CHF or except personal belongings and no visa required for crew: Follow scheme



Arrival Scheme A:

Fill out customs sheet on homepage:

<https://www.zollairport.ch/Fluganmeldung/ZollAnmeldung/ZollForm.php?ad=LSZF&la=EN>

Scheme B:

Non Schengen departures or anybody on board requires visa for CH:

Use for example Grenchen (LSZG) or St. Gallen (LSZR) as airport of entry to Switzerland.

Preflight Checklist

- ☒ Arrival Information submitted to EAS
- ☒ Flightplan filed (arriving from outside CH)
- ☒ Customs procedure followed
- ☒ Accommodation booked / Camping gear packed

Flight Preparation



Familiarise yourself with the complex airspace of Zürich and Basel if you intend to cross it, to avoid any airspace violations



Temporary airspace restrictions are published in the DABS (Daily Airspace Bulletin Switzerland)



Birrfeld Webcam (<https://birrfeld.roundshot.com>)

Approach



Consult Birrfeld airport link below

https://www.birrfeld.ch/useful_information_for_pilotes/

Please note: Use of grass RWY only for GLD, ACFT = PPR

After Landing



Runway 08/26,



We advise to get refuelled after landing to avoid delays on Sunday

Announce taxi to EAS parking area south of the field (see plan)



Follow Marshalls signals if available, show your big printed sign

ONC - Onsite Camping

FLY - will fly during event

PRK - will not fly or camp



Call at EAS Camper for Info, WLAN password, confirm FLPL closed for foreign arrivals, program, vouchers, hotel

Fees



First landing of Experimental airplanes are offered by Aeroclub Aargau!



Custom Fee payed by EAS



Camping under the wing free of charge



Voucher for Saturday Dinner CHF 28.- / € 25

Fuel



100LL (€ 2.08), Jet A1 (€ 1.84), MOGAS / ROZ98, (€ 1.78)

Departure



Check at EAS C-office

1) Meteo,

2) Customs

3) FPL

4) Pay your fuel bill and additional landing fees (1st landing is free for registered aircrafts)

Accommodation around LSZF

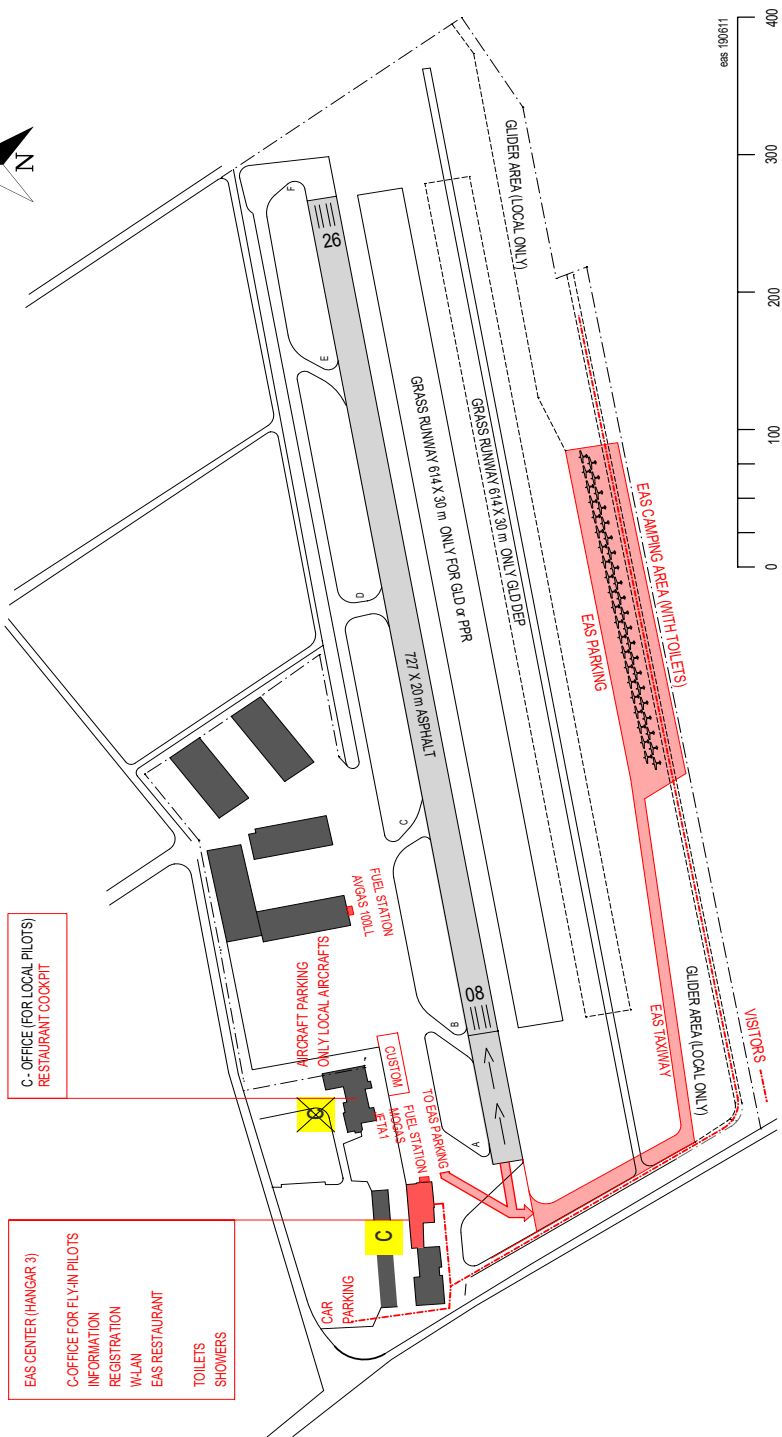


<https://www.ochsen-lupfig.ch>



<http://www.zumbaeren.ch>

Overview Plan Birrfeld LSZF



EAS CENTER (HANGAR 3)
C-OFFICE FOR FLY-IN PILOTS
INFORMATION
REGISTRATION
WILAN
EAS RESTAURANT
TOILETS
SHOWERS

C-OFFICE (FOR LOCAL PILOTS)
RESTAURANT COCKPIT

EAS Fly-In Program

Friday August 16th.

Arrivals

1200 - HJ

Arrivals, Camping, Restaurant open

1800-

Pizza or BBQ with early arriving pilots

Saturday August 17th.

0900-1100

Breakfast for campers Restaurant Cockpit
Landings of visitor airplanes, customs, inscriptions for judging,
Flee market, merchandise EAS, model building, Forum EAS,
flights with interested future builders

1100

Latest inscriptions for airplanes to be judged by EAS Jury to
win an award in:
Best Plans built airplane, Best Kit built airplane
Best Rotorcraft, Most elegant
Most innovative, Longest journey to arrive

1700

Info for Press and official Guests

1800

Apero for Guests

1900

EAS Dinner with Awards donation
Hangar 3

all day

Gyrocopter and F/A-18 Virtual Reality-Simulator

Sunday August 18th.

0800

Breakfast for campers

Restaurant Cockpit

1000 -

Arrivals

Every day flea-market airplane parts
All Day Simulator with virtual reality
Glider building with kids
EAS Merchandise

1000 - HRH-30 LT

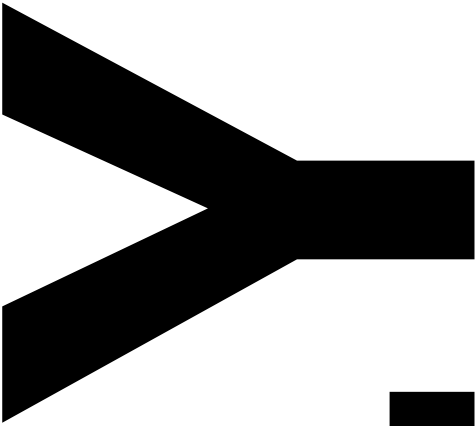
Departure

Ops restrictions: SUNDAYS no arrival or departure before

10:00 LT!

CNO

(Onsite Camping)



(will fly during event)

U

R

Y

(will not fly or camp)